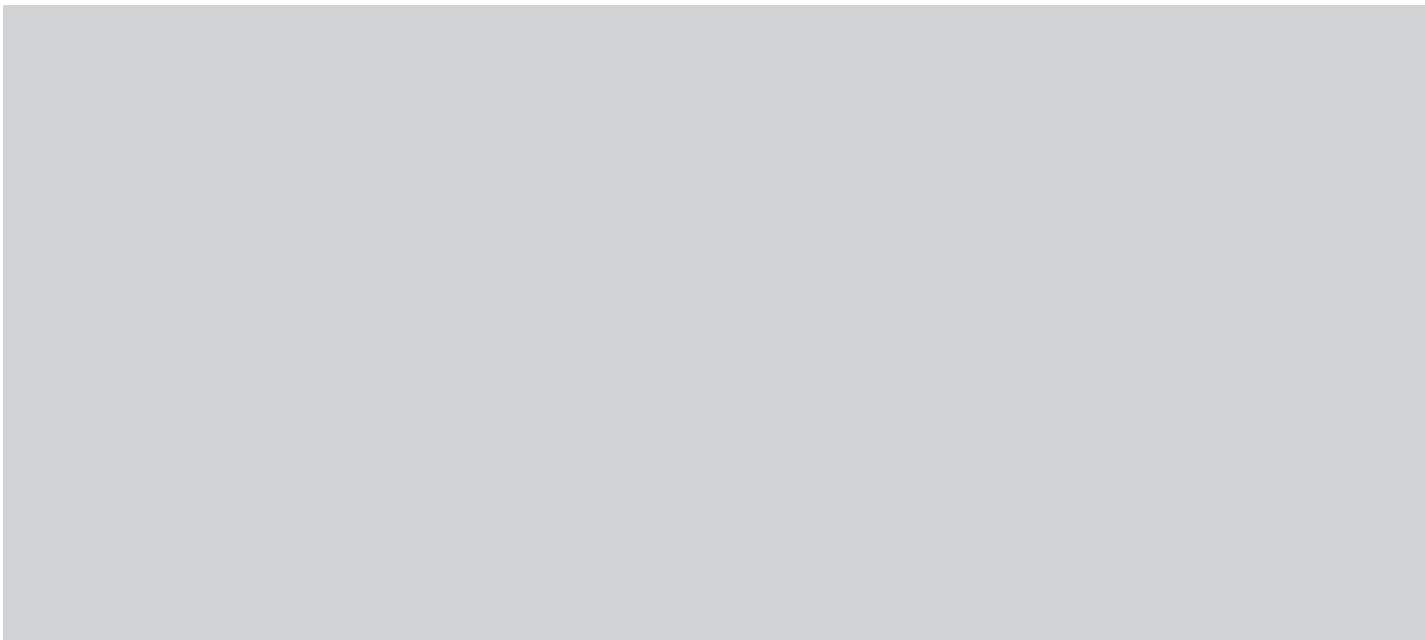


Robust system equipment and system-free accessories

Products for daily use on construction sites



PERI

Formwork Scaffolding Engineering

Rudolf-Diesel-Strasse 19

89264 Weissenhorn

Germany

Tel. +49 (0)7309.950-0

Fax +49 (0)7309.951-0

info@peri.com

www.peri.com



Edition 02 | 2015

Important information

Without exception, all current safety regulations and guidelines must be observed in those countries where our products are used.

The photos shown in this brochure feature construction sites in progress. For this reason, safety and anchor details in particular cannot always be considered as conclusive or final. These are subject to the risk assessment carried out by the contractor.

In addition, computer graphics are used which are to be understood as system representations. For ensuring a better understanding, this and the detailed illustrations shown have been partially reduced to certain aspects. The safety installations which have possibly not been shown in these detailed descriptions must nevertheless be available.

The systems or items shown might not be available in every country.

Safety instructions and load specifications are to be strictly observed at all times. Separate structural calculations are required for any deviations from the standard design data.

The information contained herein is subject to technical changes in the interests of progress. Errors and typographical mistakes reserved.

Content

Formwork Girders	3
Slab Props	4
Temporary Side Protection	6
Stopend Systems	8
Construction Site Equipment	9
Tie Systems	10
Plywood Formlining and Release Agent	11
Transportation Containers	12
PERI Product Overview	13



System-free accessories and construction site equipment play an important role on all construction sites. If the equipment is not available, then makeshift measures are implemented – with all the disadvantages, e.g. very time-consuming as well as the risk of injury. This is often aggravated by the fact that the execution result is unsatisfactory.

PERI offers formwork girders and construction equipment with clever detail solutions and functionalities. They accelerate working operations and reliably serve their purpose over many years. Thereby, the quality of the materials used and the production processes are of particular importance. Easy and simple handling as well as a long service life are thus the main features of the PERI products.

Formwork Girders



VT 20 Formwork Girder

- Universal formwork girder made of wood with a 20 cm overall height
- Weight: 5.90 kg/m
- Permissible bearing force: 11.00 kN
- Permissible bending moment: 5.00 kNm
- Bending stiffness: $EI_x = 460 \text{ kNm}^2$; $I_x = 4.181 \text{ cm}^4$
- 25 girders per girder package
- Customised imprint free of charge as of 1,000 linear metres

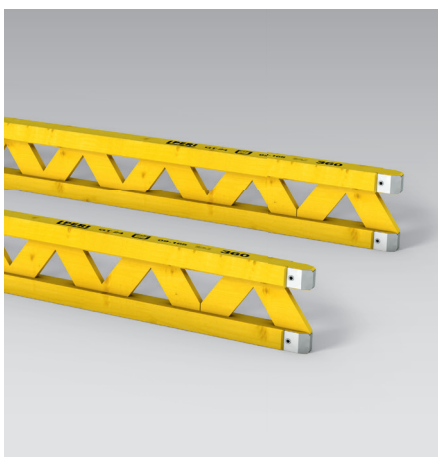
- L = 1.45 m (Item no. 073710)
- L = 2.15 m (Item no. 073720)
- L = 2.45 m (Item no. 073730)
- L = 2.65 m (Item no. 073740)
- L = 2.90 m (Item no. 073750)
- L = 3.30 m (Item no. 073760)
- L = 3.60 m (Item no. 073770)
- L = 3.90 m (Item no. 073780)
- L = 4.50 m (Item no. 073790)
- L = 4.90 m (Item no. 073800)
- L = 5.90 m (Item no. 073810)



VT 20K Formwork Girder

- Universal formwork girder made of wood with a 20 cm overall height
- Particularly robust through the steel caps on the end of the chords
- Weight: 5.90 kg/m
- Permissible bearing force: 11.00 kN
- Permissible bending moment: 5.00 kNm
- Bending stiffness: $EI_x = 460 \text{ kNm}^2$; $I_x = 4.181 \text{ cm}^4$
- 25 girders per girder package
- Customised imprint free of charge as of 1,000 linear metres

- L = 1.45 m (Item no. 074990)
- L = 2.15 m (Item no. 074905)
- L = 2.45 m (Item no. 074910)
- L = 2.65 m (Item no. 074890)
- L = 2.90 m (Item no. 074920)
- L = 3.30 m (Item no. 074930)
- L = 3.60 m (Item no. 074940)
- L = 3.90 m (Item no. 074950)
- L = 4.50 m (Item no. 074960)
- L = 4.90 m (Item no. 074970)
- L = 5.90 m (Item no. 074980)



GT 24 Formwork Girder

- Higher load-bearing capacity compared to standard timber formwork girders
- Overall height of 24 cm reduces the material usage
- Reduces labour costs and increases the quality
- Weight: 5.90 kg/m
- Permissible bearing force: 28.00 kN
- Permissible bending moment: 7.00 kNm
- Bending stiffness: $EI_x = 887 \text{ kNm}^2$; $I_x = 8.064 \text{ cm}^4$

- L = 1.80 m (Item no. 075180)
- L = 2.10 m (Item no. 075210)
- L = 2.40 m (Item no. 075240)
- L = 2.70 m (Item no. 075270)
- L = 3.00 m (Item no. 075300)
- L = 3.30 m (Item no. 075330)
- L = 3.60 m (Item no. 075360)
- L = 3.90 m (Item no. 075390)
- L = 4.20 m (Item no. 075420)
- L = 4.80 m (Item no. 075480)
- L = 5.10 m (Item no. 075510)
- L = 5.40 m (Item no. 075540)
- L = 5.70 m (Item no. 075570)
- L = 6.00 m (Item no. 075600)

Slab Props



PERI Ergo

- Available in lengths of 1.50 m, 2.50 m, 3.00 m, 3.50 m, 4.00 m and 5.00 m
- Anti-crush device with a safety clearance of 10 cm provides protection against injury
- Galvanized tubular steel props with numerous practical features for fast and safe handling
- The complete galvanization of all surfaces guarantees a long service life
- High load-bearing capacity of up to 40 kN
- Generous 12 cm adjustment range
- All props can be used upside problem-free without any loss of load-bearing capacity (load-bearing increase is also possible) Especially for props with lengths of 3.50 m and more, this brings advantages for the handling
- All PERI prop heads can be attached to both the inner and outer tubes

PERI Ergo B-300

Extension length: 1.97 m – 3.00 m
Weight: 14.00 kg
(Item no. 116780)

PERI Ergo B-350

Extension length: 2.25 m – 3.50 m
Weight: 15.60 kg
(Item no. 116790)

PERI Ergo D-150

Extension length: 0.98 m – 1.50 m
Weight: 9.10 kg
(Item no. 117230)

PERI Ergo D-250

Extension length: 1.47 m – 2.50 m
Weight: 13.10 kg
(Item no. 116770)

PERI Ergo D-350

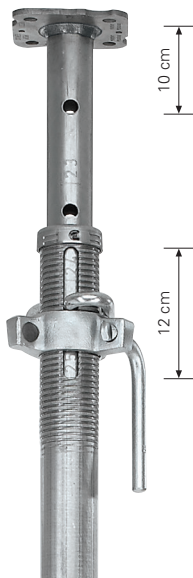
Extension length: 2.26 m – 3.50 m
Weight: 19.40 kg
(Item no. 125130)

PERI Ergo D-400

Extension length: 2.51 m – 4.00 m
Weight: 23.00 kg
(Item no. 125140)

PERI Ergo D-500

Extension length: 3.26 m – 5.00 m
Weight: 30.70 kg
(Item no. 125150)



The advantages at a glance

Anti-crush guard

A 10 cm clearance remains when the prop is pushed in. As a result, the hand is protected from being injured.

Quick adjustment

Stamped numbers on the inner tube show the overall length in dm, readable at the end of the outer tube.

Patented G-hook

Rough adjustment of the prop at a distance of 10 cm is carried out through a robust, captive, galvanized G-hook.

Less re-positioning

The large adjustment range of 12 cm makes frequent G-hook re-positioning unnecessary.

Easy release – also under full load

Thanks to the robust wing nut with its hardened support surface and a stable trapezoidal thread with up to 3 turns on the thread, easy release of the prop is possible at any time.



Erection Device PRK Frame

- In addition to the tripod, the PRK Frame can also be used as an erection device for shuttering and striking
- For slab props with tube diameters 57 mm – 84 mm
- Furthermore, the frame with its captive wedge coupling serves as a stiffening frame for PEP props or other standard tubular steel props

x = 62.5 cm	(Item no. 111811)
x = 75.0 cm	(Item no. 111812)
x = 100.0 cm	(Item no. 112813)
x = 120.0 cm	(Item no. 112814)
x = 137.5 cm	(Item no. 111813)
x = 150.0 cm	(Item no. 111814)
x = 180.0 cm	(Item no. 115980)
x = 200.0 cm	(Item no. 112718)
x = 201.5 cm	(Item no. 111815)
x = 210.0 cm	(Item no. 112788)
x = 225.0 cm	(Item no. 111816)
x = 230.0 cm	(Item no. 111817)
x = 266.0 cm	(Item no. 111818)
x = 296.0 cm	(Item no. 111819)

x = axis dimension

Temporary Side Protection

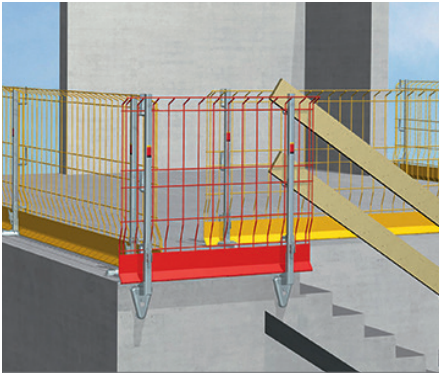


Side Mesh Barriers PMB

- Side Mesh Barriers for temporary side protection for slabs, walls and stairs including toe board
- Mounted on the posts without any additional fastening devices required
- The powder coating guarantees a long service life
- Available in different lengths

Side Mesh Barrier PMB 260
Weight: 19.70 kg
(Item no. 117326)

Side Mesh Barrier PMB 130
Weight: 10.50 kg
(Item no. 117327)



Side Foot PSF

- For mounting on walls, slab edges and stairs

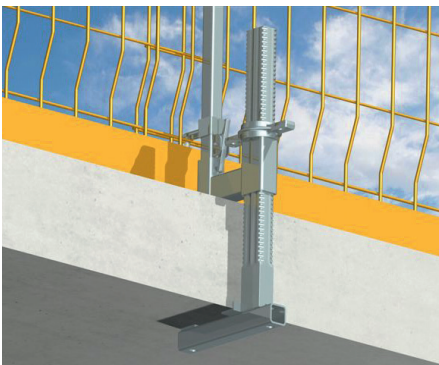
Weight: 2.21 kg
(Item no. 117324)



Uniclamp PUC

- For simple and fast mounting of anti-fall protection to the front side of the slab or on a parapet
- Maximum clamping width: 45 cm

Weight: 6.61 kg
(Item no. 118660)





Slab Foot PDF

- For mounting the Side Mesh Barrier PMB to the slab edges

Weight: 1.53 kg
(Item no. 117323)



Sheet Piling Clamp PSC

- Allows quick and easy attachment of the Side Mesh Barrier to sheet piling and the Berlin-type pit lining

Weight: 4.46 kg
(Item no. 126330)



Post PP

- For mounting Side Mesh Barriers PMB or handrail boards
- Including captive toe board retainer and self-securing anti-lift off device

Height: 112 cm
Weight: 4.27 kg
(Item no. 117325)



Screw-On Sleeve M16/164

- For temporary assembly of components on reinforced concrete slabs
- Is screwed into the fresh concrete by hand directly after concreting, thus ensuring that no cavities are formed in the concrete
- The end cap for the protection of the internal thread serves simultaneously as a hand grip

Screw-On Sleeve M16/164
(Item no. 123970)

M16 Bolt
(Item no. 123973)

Stopend Systems

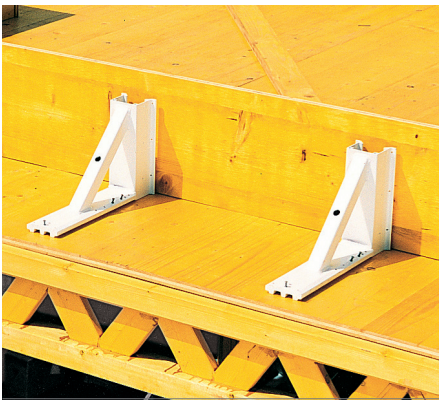


Stopend Trestle, adjustable

- Fast and cost-effective setting of stopends for bottom slabs up to 60 cm thick
- Anchoring on the ground is carried out using reusable pegs
- Setting of stopends on slabs is also possible with the Stopend Trestle

Stopend Trestle
Weight: 6.82 kg
(Item no. 065040)

Peg
Weight: 1.03 kg
(Item no. 065042)



Stopend Angle AW

- Setting of stopends on slab edges and forming of beams up to max. 40 cm high
- Minimizes the labour costs and formwork timber wastage
- Supplemented with the 1.40 m high Guardrail Posts AW, rear safety protection on slab edges can be quickly realised

Weight: 1.67 kg
(Item no. 065070)



Stopend Angle made of plastic

- Setting of stopends on slab edges and forming of beams up to max. 50 cm high
- Inexpensive construction aid
- Height of 202.5 mm
- Site-compliant alternative to conventional timber formers
- Can be combined with VT 20 and GT 24 Girders
- Defined nail and screw holes
- Integrated striking aid and stamped height increments

Weight: 0.46 kg
(Item no. 126299)



Slab Stopend Bar 105

- Setting of stopends on slab edges up to max. 50 cm
- The adjustable spindle allows exact adjustments to be made on the formwork assembly up to max. 14 cm as well as adjusting the formwork itself

Weight: 6.60 kg
(Item no. 065063)

Construction Site Equipment



Wall Clamps

- Robust and can be used for all purposes
- Suitable for accurate forming of strip foundations, beams and ring beams
- The Wall Clamps have a very high degree of angle stability
- The quick jack nut allows continuous friction-locked fine adjustment (without the use of wedges)
- The self-cleaning square thread on the clamp strut cuts through cleanly even when the thread is extremely dirty

Wall Clamp 55
Max. clamping width: 55 cm
Weight: 5.05 kg
(Item no. 065045)

Wall Clamp 75
Max. clamping width: 75 cm
Weight: 6.16 kg
(Item no. 065076)

Wall Clamp 105
Max. clamping width: 105 cm
Weight: 12.70 kg
(Item no. 065046)



Tie Rod Wrench DW 15

- Prevents the DW 15 tie rod from turning during shuttering and striking without requiring an extra man on the opposite side
- 1-man operations saves working time
- Robust and manageable
- Only a small investment required

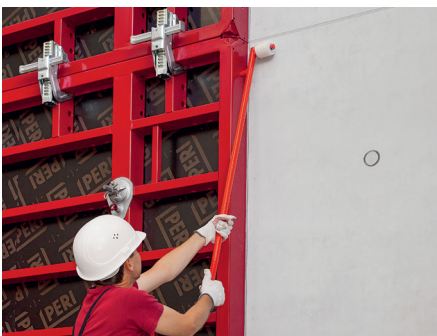
Weight: 1.26 kg
(Item no. 031070)



Tie Rod Spanner DW 15

- Facilitates the tightening and releasing of wingnuts and wingnut pivot plates
- Hammer is not required
- The tightening of the formwork can be done with the Tie Rod Spanner by one person
- Enormous time-savings especially with the top tie positions
- Only a small investment required
- Can also be combined with other formwork systems

Weight: 3.48 kg
(Item no. 108129)

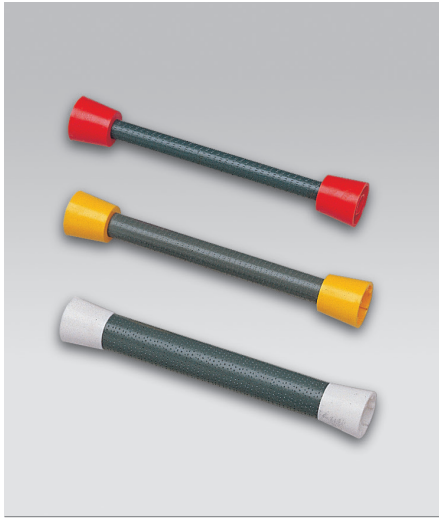


Stripping Bar

- Provides two functions in one: wall formwork elements precisely aligned during shuttering and releasing the formwork during striking without damage
- Only a small investment required
- Can also be combined with other formwork systems

Weight: 5.52 kg
(Item no. 112588)

Tie Systems



DK Cones

For ensuring subsequent, reliable sealing of tie points. The tie points are sealed with concrete cones using a specially-developed sealing compound.

- Waterproof
- Gas impermeable
- Fire-resistant
- Soundproof
- Suitable for architectural concrete
- Cones and spacer tubes for a range of tie diameters are available

Different versions for various wall thicknesses and requirements are available.



SK Anchor Cones

For ensuring subsequent, reliable sealing of tie points. The tie points are sealed with concrete cones using a specially-developed sealing compound.

- Waterproof
- Gas impermeable
- Fire-resistant
- Soundproof
- Suitable for strongrooms and architectural concrete

Different versions for various wall thicknesses and requirements are available.



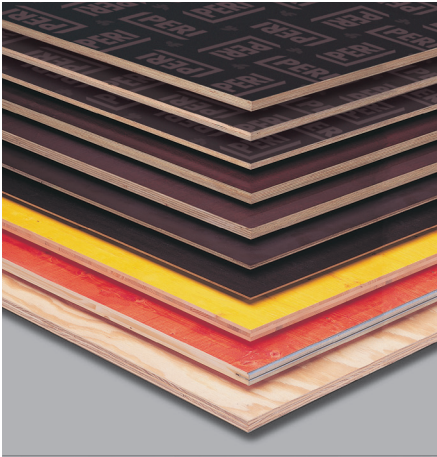
Cone variants for architectural concrete

Used for attractively designed visible concrete surfaces.



Against pressing water, for walls with a soundproofing function as well as walls with Fire Resistance Class F90.

Plywood Formlining and Release Agent



Plywood Formlining

- Available in various dimensions and nominal thicknesses
- The right formliner for all requirements

PERI Birch
 FinPly
 RusPly
 PERI Spruce 400
 3-Ply Plywood
 ... and many more



PERI Bio Clean

The rapidly biodegradable release agent for formwork and equipment.

- Manufactured on a mineral oil basis
- Quickly biologically degradable
- Usage: 50-90 m² formwork surface per litre
- Water Contamination Class 1

PERI Bio Clean, 20 L
 (Item no. 031440)

PERI Bio Clean, 208 L
 (Item no. 031455)

PERI Clean, 20 L
 (Item no. 031420)

PERI Clean | PERI Plasto Clean

Chemical-physical concrete release agent manufactured on a mineral oil basis.

- Can be used for standard formwork and construction site equipment
- Usage: 50-90 m² formwork surface per litre.
- Water Contamination Class 1

PERI Clean, 208 L
 (Item no. 031435)

PERI Plasto Clean, 20 L
 (Item no. 118778)

PERI Plasto Clean, 208 L
 (Item no. 118779)



Release Agent Pressure Sprayer

For spraying formlining surfaces evenly with PERI BIO Clean, PERI Clean or PERI Plasto Clean.

Weight: 4.7 kg
 (Item no. 104890)

Complete with

- 1 x flat spray nozzle
- 1 x spiral hose 2.5 m
- 1 x shut-off valve
- 1 x sealing kit
- 1 x air pump

Transportation Containers



Crate Pallet

- Permissible load: 1,500 kg
- Corresponds to Euro pallet dimensions
- Stackable – also with frame pallets
- Foldable side part

Box galvanized 80 x 120
Height: 90 cm
Content: approx. 0.75 m³
Weight: 88.10 kg
(Item no. 065068)

Box painted 80 x 120
Height: 90 cm
Content: approx. 0.75 m³
Weight: 88.10 kg
(Item no. 065016)



Hardware Box

- Permissible load: 1,500 kg
- Stackable with crate pallets and frame pallets
- For stacking and transporting formwork and scaffold components

Box galvanized 80 x 120
Height: 50 cm
Content: 0.28 m³
Weight: 66.40 kg
(Item no. 025660)

Box painted 80 x 120
Height: 50 cm
Content: 0.28 m³
Weight: 66.40 kg
(Item no. 025670)



Frame Pallet RP-2

- Permissible load: 1,500 kg
- Corresponds to Euro pallet dimensions
- Up to 4 pallets can be stacked on top of each other, for transport by truck never stack more than 2 pallets
- Stackable with PERI crate pallets
- Galvanized

Pallet 80 x 120
Height: 90 cm
Weight: 33.40 kg
(Item no. 103434)

Pallet 80 x 150
Height: 90 cm
Weight: 40.30 kg
(Item no. 103429)

PERI Product Overview

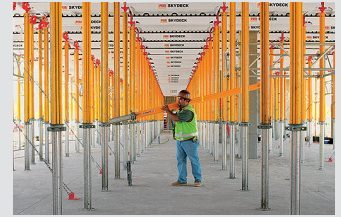
The optimal system
for all projects and
every requirement



Wall Formwork



Column Formwork



Slab Formwork



Climbing Systems



Bridge Formwork



Tunnel Formwork



Shoring Systems



Construction Scaffold



Facade Scaffold



Industrial Scaffold



Access



Protection Scaffold



Safety Systems



System-Free Products



Services



**Formwork
Scaffolding
Engineering**

www.peri.com

